



Copyright, 1947 Ford Motor Co.

**LIFT
TYPE**

FOUR ROW WEEDER



ASSEMBLY and OPERATING *Instructions*

DEARBORN MOTORS CORPORATION — DETROIT 3, MICHIGAN

TABLE OF CONTENTS

Introduction	1
General Description	2
Assembly Procedure	4-6
Safety Precautions	6
Attaching	7
Operation	8
Hints on Maintenance	9
Warranty	

Dearborn Motors Corporation reserves the right to make changes in design, materials, and/or specifications, without notice and without liability therefor.

Introduction

The Dearborn Four Row Weeder is one item of the basic line of Dearborn Equipment all of which is designed for use with the Ford tractor. Each item of this equipment has been designed to aid you in the performance of specific agricultural operations.

The function of the Four Row Weeder is to kill weeds that retard the normal growth of your crop. Strong flexible tines do this job effectively while the breaking of the soil crust aids in seed bed aeration and promotes vigorous crops. The Dearborn Four Row Weeder attached to your Ford Tractor can easily cover a large acreage in a day. This efficiency saves time and labor and increases your profits. Early weeding results in healthy crops and aids in keeping them clean throughout the season.

This manual contains information about the Dearborn Four Row Weeder, its assembly, operation and care. Follow the instructions in this manual in detail to get the most out of your weeder.

Your Ford Tractor dealer will instruct you in the operation of the Dearborn Four Row Weeder. He will show you how the depth of penetration may be controlled by use of the Ford Hydraulic Touch Control lever, and how you can raise or lower the weeder without leaving the seat of your tractor.

Your Ford Tractor dealer has the answer to any questions that may arise regarding the operation of your Dearborn Four Row Weeder. He is interested in your getting the most out of your investment in this equipment. He has plenty of "know how" to help you get started right.

In addition, your Ford Tractor dealer carries a complete stock of genuine Ford Tractor and Dearborn Equipment Repair Parts. These parts are precision manufactured assuring high quality and accurate fit. *Insist on genuine Ford Tractor and Dearborn Equipment Repair Parts.*

DEARBORN FOUR ROW WEEDER — *General Description*

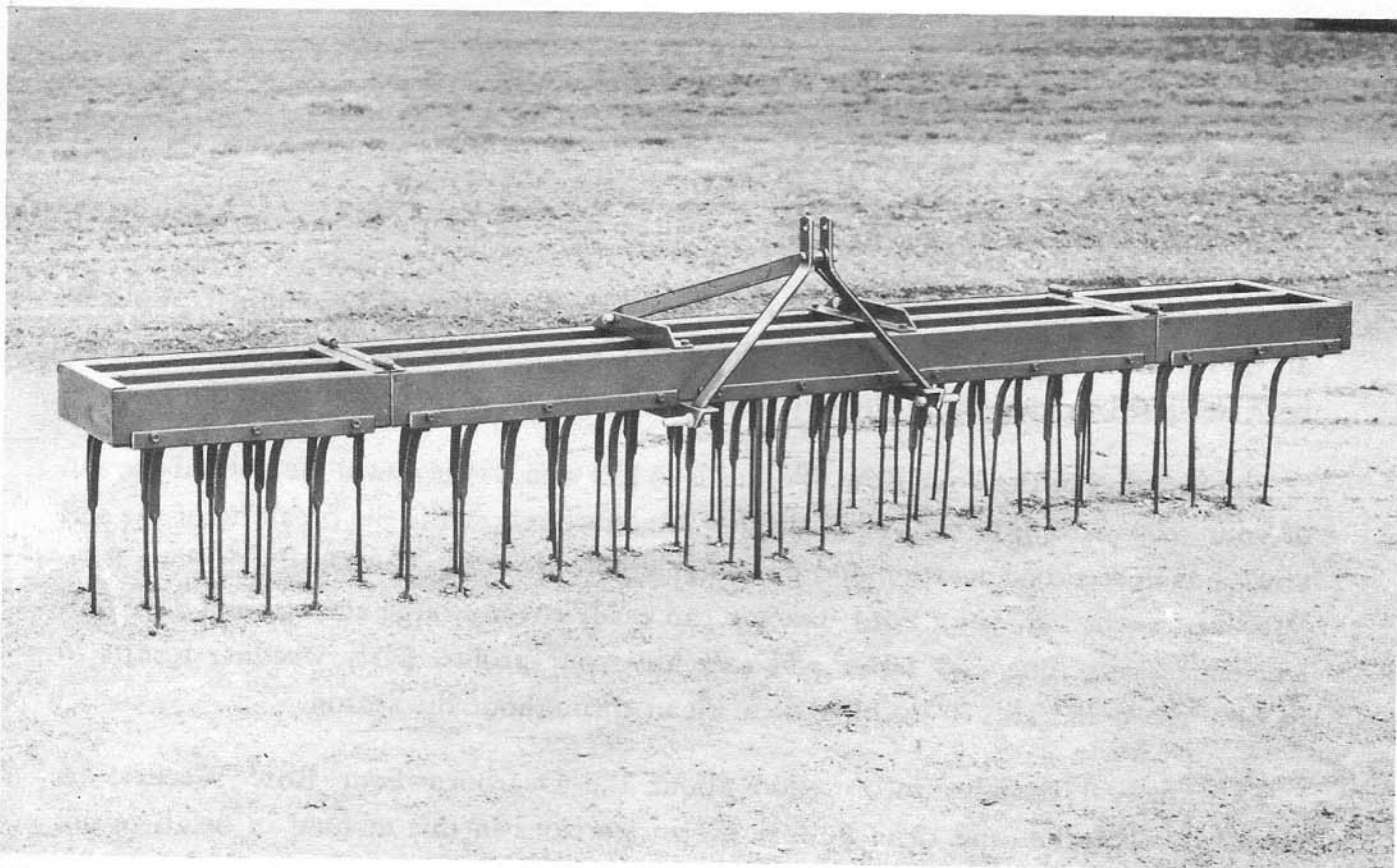


Figure 1

The Dearborn Four Row Weeder, pictured above, is a sturdily constructed implement designed to give many years of trouble free service. The rigid, main frame and "A" frame are made of high quality, angle steel and will withstand hard usage. The 74 spring-steel tines are properly shaped and pointed for maximum soil penetration and agitation. The light draft of this tool plus the effectiveness

with which weeds are destroyed combine to make this one of the most efficient methods of cultivating small plants.

In addition, the Dearborn Four Row Weeder is highly maneuverable. The end sections may be folded over to allow you to pass through gates, narrow lanes and shop doors.



EXPLODED VIEW OF FOUR ROW WEEDER

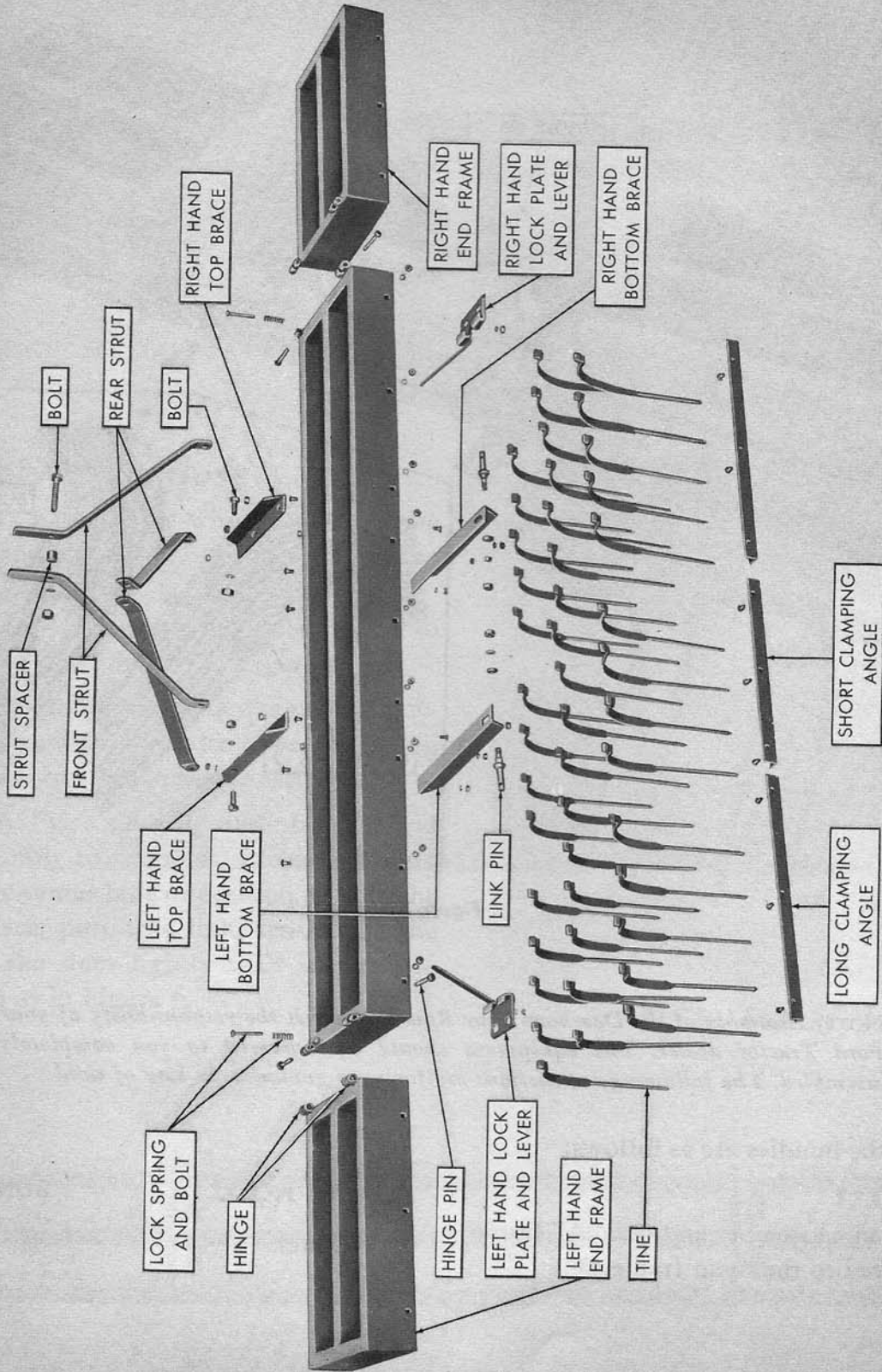


Figure 2

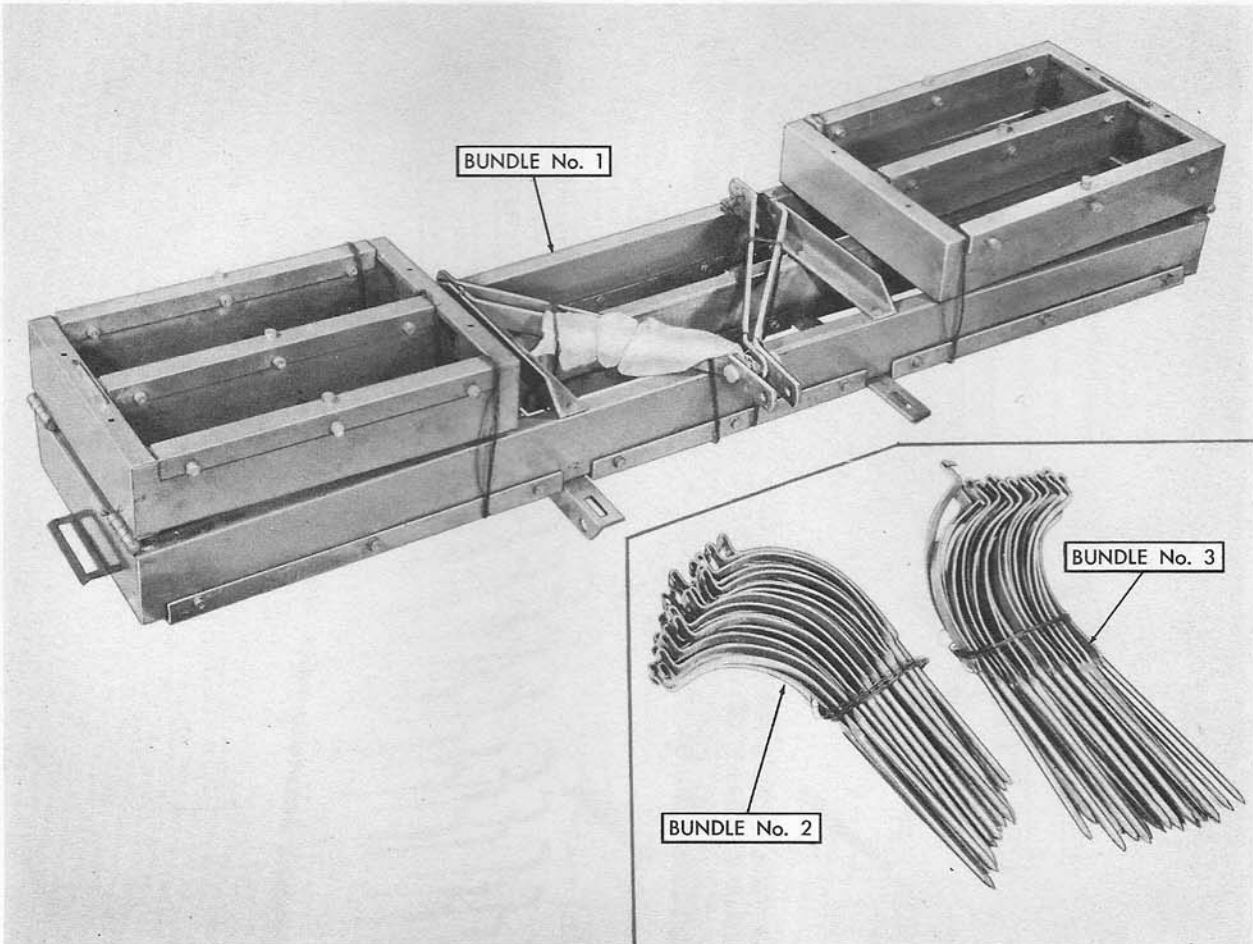


Figure 3

NOTE: Assembly of the Dearborn Four Row Weeder is the responsibility of your Ford Tractor dealer. The equipment should be delivered to you completely assembled. The following instructions are for your guidance, in case of need.

Contents of the bundles are as follows:

BUNDLE NO. 1

One main frame assembly and one "A" frame assembly wired to the main frame.

BUNDLE NO. 2

Tines

BUNDLE NO. 3

Tines

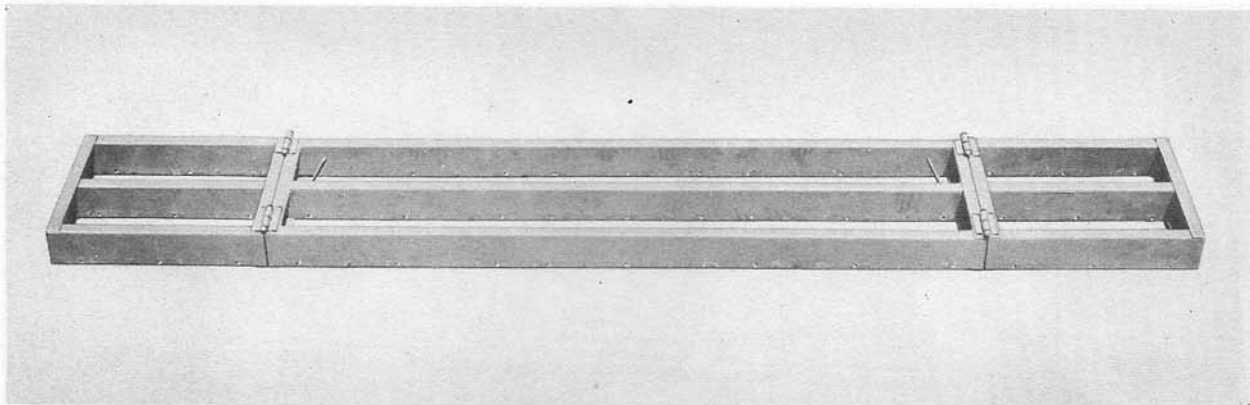


Figure 4

Assembly Procedure

Step No. 1: Remove the wire bands from the weeder frame and lay out the "A" frame section.

Unfold the end sections until they lock into a straight line position. (See Figure 4)

Step No. 2: Place the main frame on saw-horses and install the weeder tines, beginning with the rear row of the center sections.

Step No. 3: Place tines in angle bracket and fasten assembly to frame as shown in Figure 5. Place the center bolt in position to hold the tines in place, putting a light tension on the bolt. Tap the tines lightly with hammer to space them as in Figure 6.

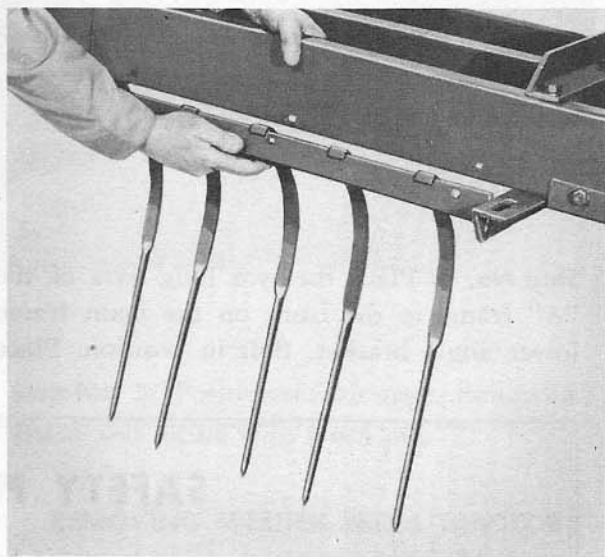


Figure 5

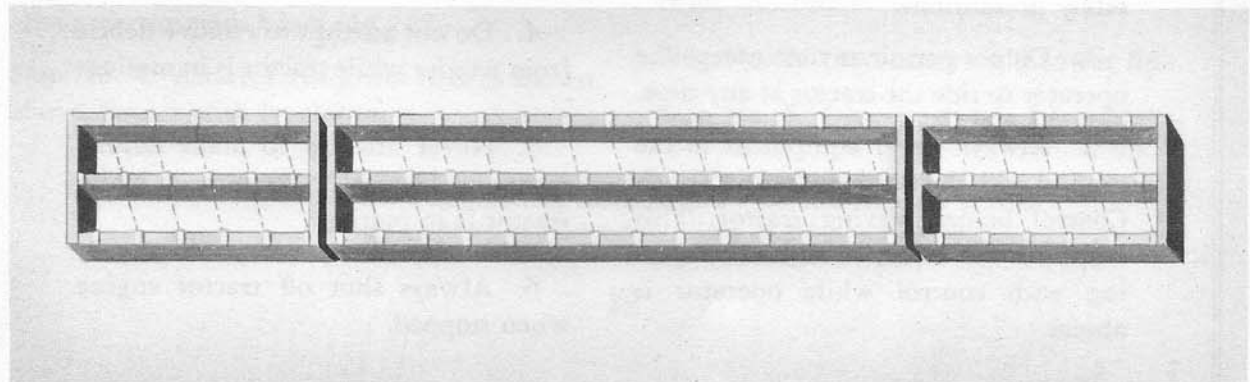


Figure 6

ASSEMBLY OF THE FOUR ROW WEEDER

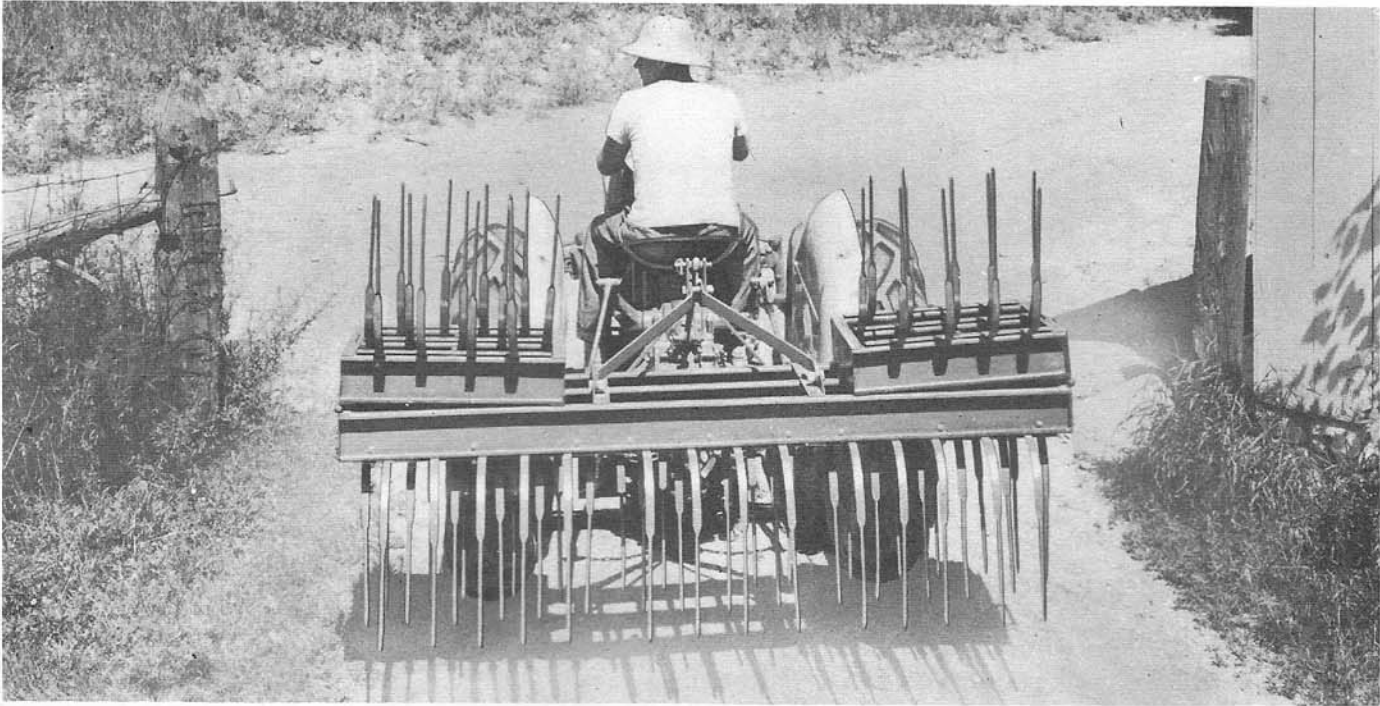


Figure 7

Step No. 4: Place the two long bars of the "A" frame to the front on the main frame lower angle bracket. Bolt in position. Place

the two short bars of the "A" frame to the rear and bolt in position. Line up all bars at the top, separate with bushing and bolt in place.

SAFETY PRECAUTIONS

Most farm equipment accidents can be avoided by following these simple safety precautions.

1. Do not permit anyone except the operator to ride the tractor at any time.
2. Always lower equipment to the ground with the Ford Hydraulic Touch Control before leaving tractor. This helps prevent injury to anyone tampering with control while operator is absent.
3. Operator should never leave seat of tractor while it is in motion.
4. Do not attempt to remove debris from weeder while tractor is in motion.
5. Never attempt to make adjustments on tractor or equipment while tractor is in motion.
6. Always shut off tractor engine when stopped.

ATTACHING FOUR ROW WEEDER TO TRACTOR

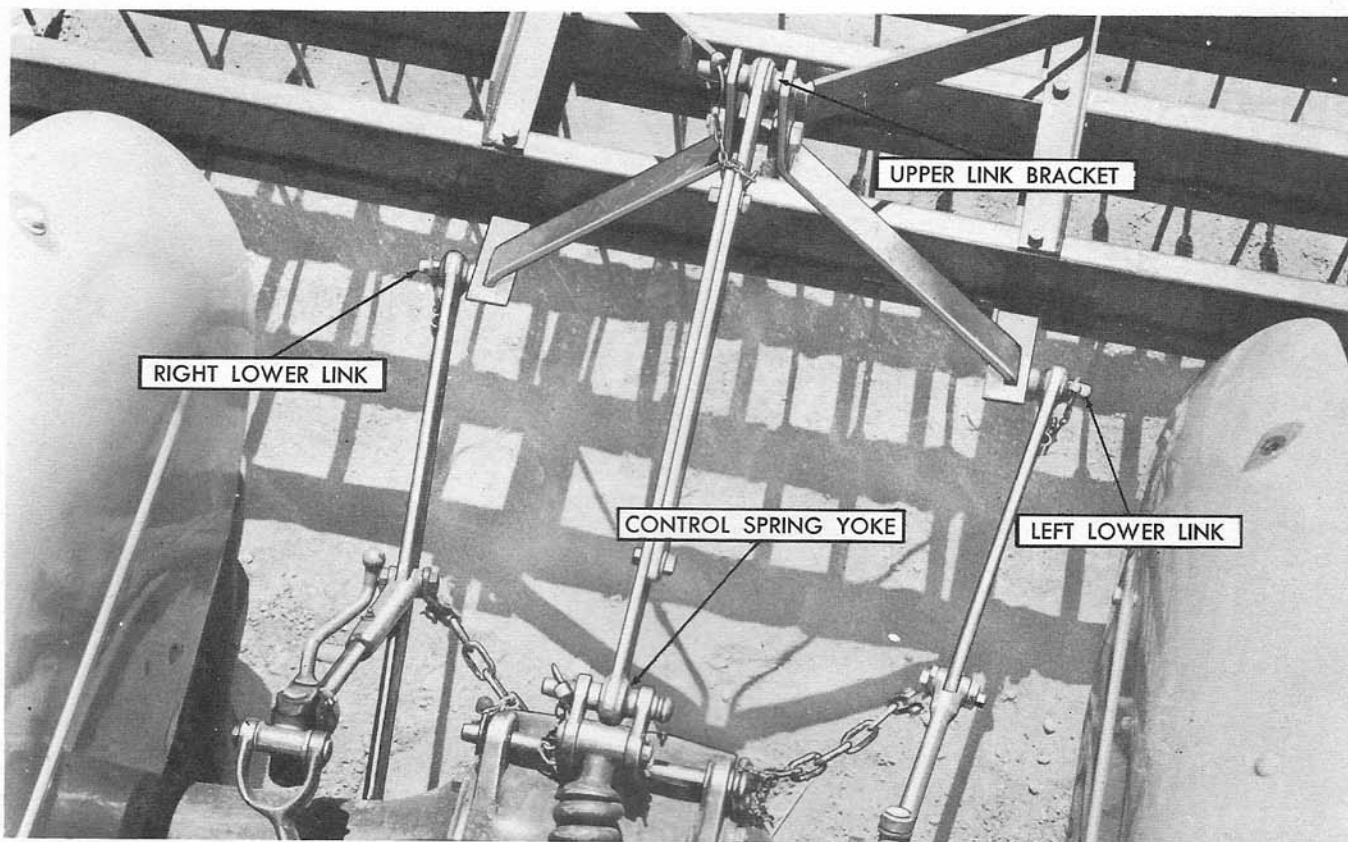


Figure 8

Procedure

Step No. 1: Place the Dearborn Four Row Weeder on level floor or level ground where it is accessible to the tractor.

Step No. 2: Back tractor into position.

Step No. 3: Attach left lower link as shown above. Secure with lynch pin.

Step No. 4: Attach right lower link as shown above. Secure with lynch pin.

Step No. 5: Position tractor upper link in "A" frame and secure with lynch pin.

REMOVING WEEDER FROM TRACTOR

Step No. 1: Disconnect tractor upper link from "A" frame.

Step No. 2: Disconnect right lower link.

Step No. 3: Disconnect left lower link.

CAUTION: Be sure that the Dearborn Four Row Weeder is completely disconnected before attempting to move the tractor.

OPERATION OF THE FOUR ROW WEEDER

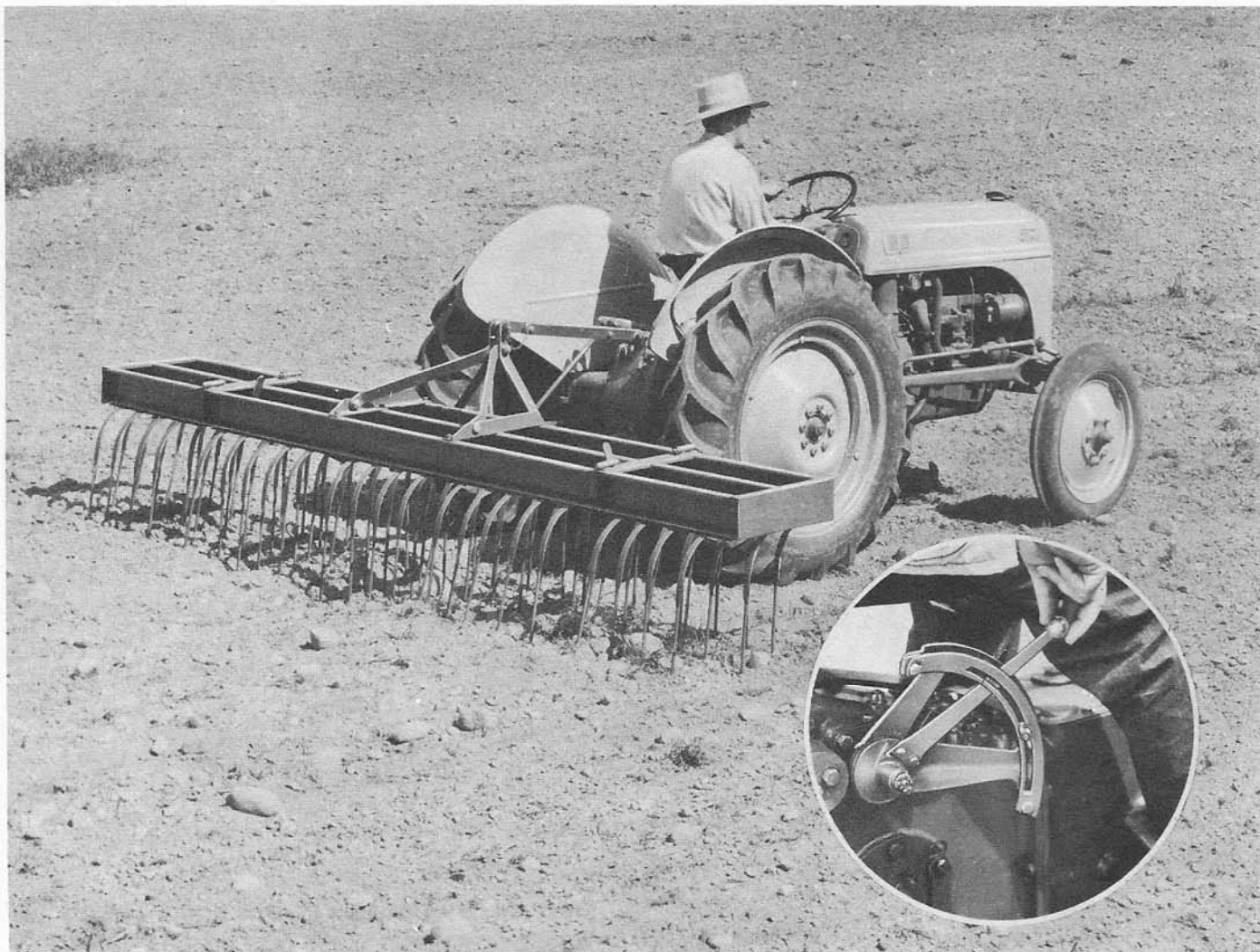


Figure 9

Field Operation

The Dearborn Four Row Weeder is easily manipulated from the seat of your Ford Tractor and is raised and lowered by the Ford Hydraulic Touch Control. This enables you to get into corners and completely cultivate small fields. The ease of depth control with the Ford Hydraulic Touch Control makes possible a very efficient job with little physical effort on the part of the operator.

At normal field speed, the Ford Tractor with the Dearborn Four Row Weeder will cultivate approximately 50 acres a day with relatively low fuel consumption. The sharp tines tear out the detrimental weeds, leaving them exposed to the wind and sun. Thus they are prevented from robbing the soil of valuable moisture and nutrients.

HINTS ON MAINTENANCE

1. The Dearborn Four Row Weeder requires no lubrication.
2. When storing the equipment for a long period, cover the points of the tines with a good grade of rust preventive.
3. Touch up exposed parts of the weeder with paint as required.
4. Normal care will prolong the life of your weeder and repay you with trouble-free service.
5. Replace any broken or bent tines at once. Broken or bent tines greatly decrease the efficiency of your weeder.
6. *Use genuine Dearborn Equipment Repair Parts.*

DEARBORN MOTORS CORPORATION

EQUIPMENT WARRANTY

DEARBORN MOTORS CORPORATION warrants all parts (other than tires) of equipment bearing the trade mark "Dearborn Equipment" to the original purchaser thereof at retail, for a period of six (6) months from the date of delivery thereof to the original purchaser at retail, to be free from defects in workmanship and material under normal use and service. The obligation of Dearborn Motors Corporation under this warranty shall be limited to shipment, without charge to the original purchaser at retail, of the part or parts of such Dearborn Equipment intended to replace the part or parts acknowledged by Dearborn Motors Corporation to be defective in workmanship or material. This warranty is in lieu of all other warranties, expressed or implied, and of all obligations or liabilities on the part of Dearborn Motors Corporation, and it neither assumes nor authorizes any person to assume for it, any other obligation or liability in connection with workmanship or material of equipment bearing the trade name "Dearborn Equipment" or any part thereof. This warranty shall not apply to any Dearborn Equipment, or any part thereof, which has been damaged in any accident, or by fire, flood, or Act of God, or abused or misused, or which has been altered elsewhere than at the place of manufacture, or in which the original purchaser thereof at retail, has used or allowed to be used, parts not made or supplied by Dearborn Motors Corporation. Dearborn Motors Corporation reserves the right at any time to make changes in the design, materials and/or specifications of equipment bearing the trade mark "Dearborn Equipment" and/or accessories therefor, without thereby becoming liable to make similar changes in equipment bearing the trade mark "Dearborn Equipment" and/or accessories therefor, previously manufactured.

DEARBORN MOTORS CORPORATION
DETROIT 3, MICHIGAN